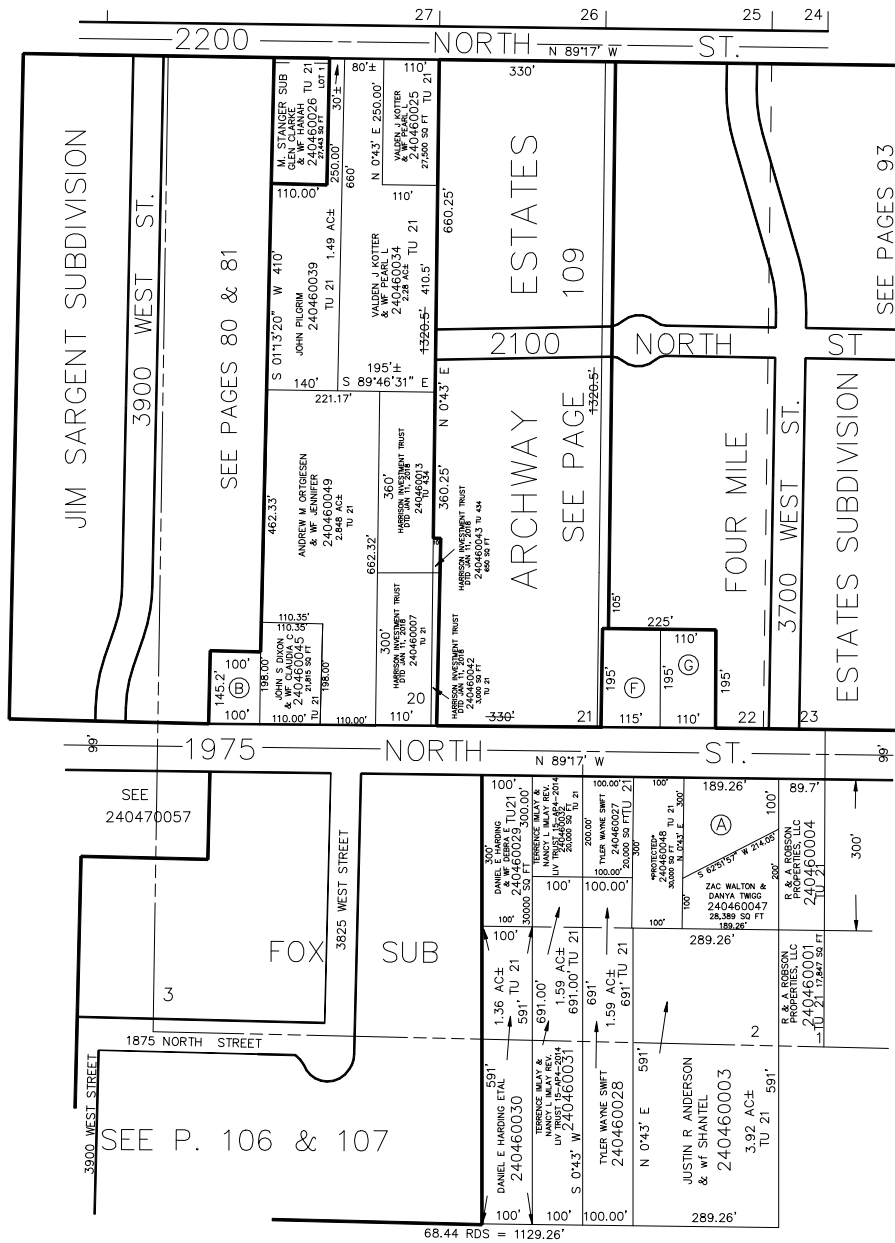


PLAIN CITY
LOTS 1, 2 & 20 TO 23, PLAT B

TAXING UNIT: 21,339,434

SCALE 1" = 200'

SEE PAGE 50



SEE BOOK 19
PAGE 35

(A) ZACHARY S WALTON & WF DANYA W TWGG 240460024 28,398 SQ FT TU 21

(B) LISA A SEFTON SHANK & CHRISTOPHER SHANK 240460023 14,520 SQ FT TU 21

(D) DOUBLE J DEV LLC 240460009 TU 21

(E) JOHN CAMPBELL & WF LILLIAN 240460016 22,425 SQ FT TU 21

(C) JALENE KRAFT & HUSB CRAIG 240460021 21,450 SQ FT TU 21

SEE ORIGINAL DEDICATION
PLAT OF PLAIN CITY IN
BOOK 5, PAGE 80 OF RECORDS.

SEE BOOK 15
PAGE 10